

# PS 1x1x P Series - Perimeter seal

## FITTING INSTRUCTION

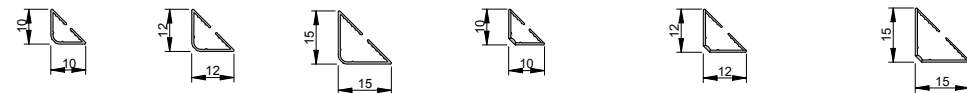


### TOOLS REQUIRED

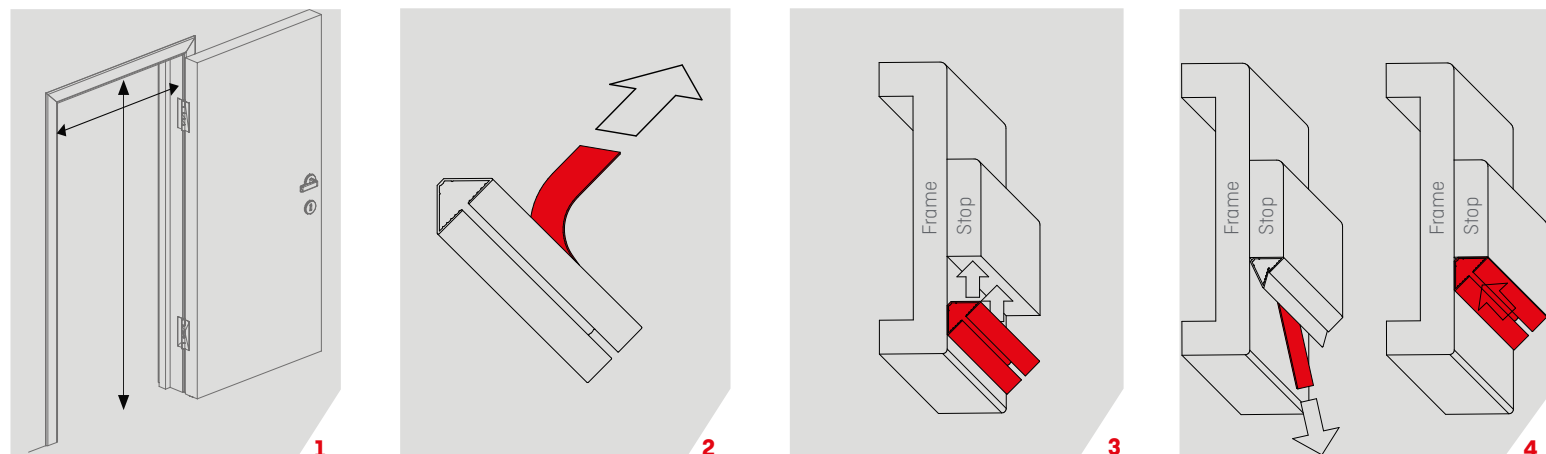
- / pencil or marker
- / tape measure
- / cutter

### VALID FOR:

PS 1010 P   PS 1212 P   P 1515 P   P 1010 P FLEX   PS 1212 P FLEX   P 1515 P FLEX



### INSTRUCTIONS:



- 1 To be fitted with the door fully opened. Stop and face of the frame must be dry, dust and grease-free; clean with isopropyl alcohol. Measure the height and width of the door frame and cut the seal to the appropriate length.
- 2 Peel off one of the two protective films few centimeters at a time to reveal the adhesive side.  
Non-Flex only: Peel off the second protective film just a little, so that it can be grabbed and pulled off later in step 4.
- 3 Place the seal with the unpeeled backing at the top corner of the frame and slide towards the door stop until the peeled adhesive side meets and sticks to the stop. Fit the seal this way from top to bottom.
- 4 Peel off the second protective film and press the seal onto the frame along its entire length to ensure proper adhesion.
- 5 Repeat on the other side and at the top of the frame
- 6 Close the door and check for a uniform seal around the door.

### NOTE:

- / store in original cartons, dry and dust-free, at 10° - 40°C and 50% - 70% relative humidity
- / recommended use of product within 1 year as the adhesive on this seal has a shelf life
- / suitable for installation on new doors as well as for retro-fitting on existing doors
- / designed to seal gaps of 2 - 4 mm between door leaf and frame
- / ensure surfaces where the seal is being fitted are clean, dry, and grease-free and all dust and wax is removed before bonding. athmer cannot guarantee all surface finishes will be compatible with the product's self-adhesive backing.
- / product is not to be stretched
- / do not touch the adhesive side as this will reduce the adhesive strength
- / once fitted, it should not be relocated as the original adhesive strength may not be achieved again
- / make sure the fitting of the perimeter seal does not obstruct the function of the door. It is recommended to regularly check that the door opens and closes frictionlessly.