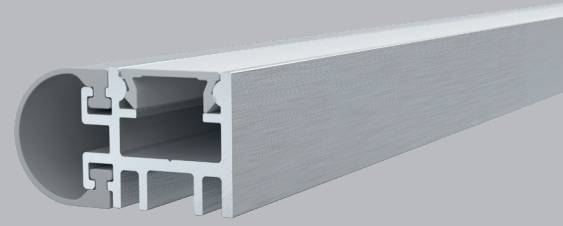


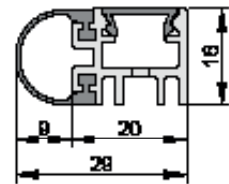
PS 2816 S

- / surface-mounted acoustic perimeter seal for fitting around the head and jambs of existing doors
- / with elongated fixing holes for easy positioning and adjustment
- / fixing screws concealed by snap on cover
- / also suitable for retro-fit applications



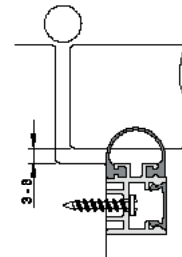
TECHNICAL DATA

Application	timber & metal frames
Gasket material	silicone, self-extinguishing
Carrier material	aluminum, anodized
Working temperature range	-40°C to +200°C



DIMENSIONS

Width x height	29 x 16 mm
Fitting tolerance range	3 - 8 mm
Standard lengths	1.000, 2.100, 2.250, 2.500, 3.000 mm
Maximum lengths	3.000 mm
Can be shortened by	any length



FIXING

Fixing	surface mounted to the door frame, screw fixed
--------	--

COLORS (carrier, gasket)	ART.NO.	ACCESSORIES (incl. in delivery)
Silver anodized, grey	8-115	S023
Black anodized, black	8-116	S023