



athmer.com

Portfolio selection

MIDDLE EAST / SOUTH ASIA / ASIA / SOUTH EAST ASIA
2022

athmer



ATHMER IS THE LEADING GLOBAL SPECIALIST

in acoustic and fire protection systems.

WE HAVE BEEN DEVELOPING AND MANUFACTURING

/ premium acoustic sealing systems for over 60 years and our products have been installed in countless buildings worldwide.

INNOVATION AND CONTINUOUS DEVELOPMENT ARE CORNERSTONES OF OUR PHILOSOPHY.

/ in keeping with this we continue to develop our already extensive range of acoustic sealing products in order to offer our customers the most comprehensive and versatile offering on the market.

/ the latest additions can be found in the following pages.

FIRE DOOR AND CERTIFICATION REQUIREMENTS PLAY AN EVER-INCREASING ROLE TODAY.

/ many of the products contained within this brochure carry the UL Mark having been approved by UL as Category J Gaskets.

/ they fall under the scope defined in UL Category GVI, which covers the topic of “gasketing and edge-sealing materials for fire doors, positive-pressure tested”.



Underwriters Laboratories Inc. (UL) is a leading product safety testing and certification organisation, focusing on fire and personal injury. It has been an architect in the U.S. safety system having developed 1040 product standards & outlines and continues to actively participate in **national and international standards development**.

The UL mark is the most widely recognised and accepted evidence of a product's compliance with U.S. & Canadian safety requirements. It is one of the most valued **product safety** symbols worldwide, including Asia & the Middle East. UL carries out a detailed inspection of products, their components and production processes. Certification can only be granted after strict and comprehensive checks. Checks are repeated at regular intervals with UL carrying out over 600,000 audit inspections each year.

UL have evaluated the majority of our seals in this brochure under the UL category GVI, which concerns 'gasketing and edge-sealing materials for fire doors, positive-pressure tested'. The standard used to investigate products in this category is ANSI/UL 10C, "positive pressure **fire tests** of door assemblies".

The seals are categorized as Category J gaskets. UL defines seals in this category as having been "investigated to positive pressure with respect that they do not contribute to flaming during the fire test". Gasketing material in this category can be installed on **certified fire doors** at the fire door and/or frame manufacturer's plant or at the job site.



athmer group in Asia

After athmer first gained a foothold in the Asian market in 2015 with the founding of **Qingdao Sophiehammer Hardware Co., Ltd (QSH) in China**, the company continuously expanded its presence in the Middle and Far East in the years that followed. athmer established branches in no less than three growth centers on the Asian continent: in **Singapore**, **India** and **Dubai**.

The most important goal is to establish greater proximity to local customers. On the one hand, the establishment of the branches makes it possible to keep

products in central warehouses or at regional distributors and thus make them available more quickly. On the other hand, Asian customers have personal contacts in their region, which simplifies and optimizes service and support. As athmer's expertise relates not only to drop seals but to the entire door system, local employees can provide customers with individual and competent advice - for example with regard to specific standards and requirements. Customers can thus be sure of receiving the right product for their requirements.

Content

CHAPTER	CATEGORY	PAGE
1	Drop seals	
1.1	/ rebated drop seals for hinged doors	6
2	Flush bolts for drop seals	12
3	Perimeter seals	
3.1	/ self-adhesive perimeter seals	14
3.2	/ perimeter seals for installation in a groove	20
3.3	/ surface mounted perimeter seals	21
4	Bottom seals	26
5	Rain drip guard	34
6	Threshold plates	
6.1	/ stainless steel & aluminium threshold plates	36
6.2	/ panic thresholds	40
7	Intumescent seals & hardware protection	
7.1	/ graphite intumescent seals	42
7.2	/ intumescent hardware protection sheets	46
8	Finger protection systems	
8.1	/ roller blinds	48
8.2	/ protective profiles	50



Schall-Ex® L-14/35 EK

1-935

- / drop seal with common groove dimension
- / parallel actuation minimises friction with the floor
- / tool-free actuator can be deactivated before building occupancy
- / actuator requires no protective press plate for the frame
- / end plates provide neat finish

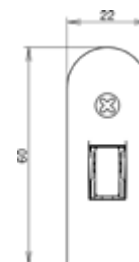


TECHNICAL DATA

Application	hinged timber door
Actuation	single
Gasket material	self-extinguishing silicone

DIMENSIONS

Width x height	14 x 35 mm
Standard lengths	635, 735, 835, 935, 1035, 1135, 1235 mm
Minimum lengths*	235 mm
Maximum lengths	1635 mm
Can be shortened by	100 mm from standard lengths
Travel	20 mm



FIXING/MONTAGE

Fixing	rebated into a groove in the door, screw fixed either side
Accessories included with delivery	5519



PERFORMANCE & CERTIFICATES

Fire	EN 1634-1**, UL10B & UL10C (R38166)
Acoustic	51dB over 7mm gap, 44dB over 12mm gap
Smoke	Certifire TS21 (CF 5675)

* min. lengths cannot be shortened

**The test value may differ according to the EN 1634-1 test, as the complete door system must be checked.

Schall-Ex® L-15/30 OS

1-881

- / the state of the art drop seal
- / parallel actuation minimises friction with the floor
- / tool-free actuator can be deactivated before building occupancy
- / actuator requires no protective press plate for the frame
- / no lateral travel during actuation enhances gasket position

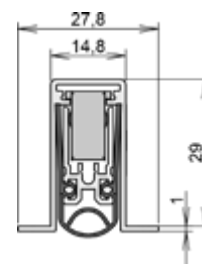


TECHNICAL DATA

Application	hinged timber & metal door
Actuation	single
Gasket material	self-extinguishing silicone

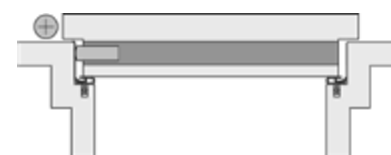
DIMENSIONS

Width x height	14,8 x 30 mm
Standard lengths	708, 833, 958, 1083, 1208 mm
Minimum lengths*	235 mm
Maximum lengths	2335 mm
Can be shortened by	125 mm from standard lengths
Travel	20 mm



FIXING/MONTAGE

Fixing	rebated into a groove in the door, screw fixed to the underside
--------	---



PERFORMANCE & CERTIFICATES

Fire	EN 1634-1**, UL 10B & 10C (R38166)
Acoustic	52dB over 7mm gap, 51dB over 12mm gap
Smoke	Certifire TS21 (CF 5675)

* min. lengths cannot be shortened

**The test value may differ according to the EN 1634-1 test, as the complete door system must be checked.



Schall-Ex® Ultra OS

1-293

- / corrosion-resistant drop seal
- / salt spray tested to EN 1670, Class 5 (480 hours)
- / ideal for use in high humidity environments
- / overload protection protects seal from excessive wear
- / also available with double actuation

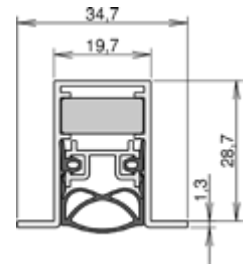


TECHNICAL DATA

Application	hinged timber & metal door, hinged timber & metal gate
Actuation	single
Gasket material	self-extinguishing silicone

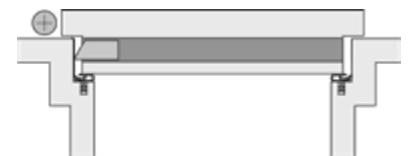
DIMENSIONS

Width x height	19,7 x 30 mm
Standard lengths	708, 833, 958, 1083, 1208 mm
Minimum lengths*	220 mm
Maximum lengths	2000 mm
Can be shortened by	125 mm from standard lengths
Travel	12 mm



FIXING/MONTAGE

Fixing	rebated into a groove in the door, screw fixed to the underside
Accessories included with delivery	5503



PERFORMANCE & CERTIFICATES

Fire	UL10B & UL10C (R31866)
Smoke	Certifire TS21 (CF 5675) Acoustic: 51dB over 7mm gap

FURTHER VARIANTS

double actuation 1-292
 (techn. data may differ)

* min. lengths cannot be shortened



Stadi L-24/20 TS

1-960

- / the modular system door seal
- / parallel actuation minimises friction with the floor
- / tool-free actuator can be deactivated before building occupancy
- / actuator requires no protective press plate for the frame
- / overload protection protects seal from excessive wear

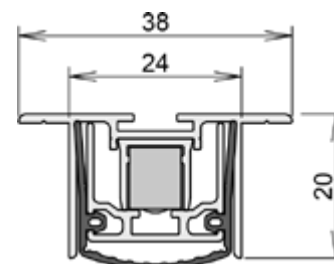


TECHNICAL DATA

Application	hinged metal & PVC door
Actuation	single
Gasket material	self-extinguishing silicone

DIMENSIONS

Width x height	38 x 20 mm
Standard lengths	750, 900, 1050, 1200 mm
Minimum lengths*	230 mm
Maximum lengths	3000 mm
Can be shortened by	150 mm from standard lengths
Travel	16 mm



FIXING/MONTAGE

Fixing	screw fixed into the chamber at the underside of the door
Accessories included with delivery	5503



PERFORMANCE & CERTIFICATES

Fire	UL10B & UL10C (R38166)
Acoustic	54dB over 7mm gap, 51dB over 12mm gap

* min. lengths cannot be shortened

1 Drop seals
1.1 rebated drop seals for hinged doors



Stadi L-24/20 OS

1-959

- / the modular system door seal
- / parallel actuation minimises friction with the floor
- / tool-free actuator can be deactivated before building occupancy
- / actuator requires no protective press plate for the frame
- / overload protection protects seal from excessive wear

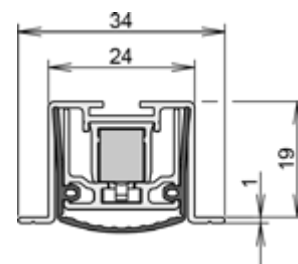


TECHNICAL DATA

Application	hinged timber & metal & PVC door
Actuation	single
Gasket material	self-extinguishing silicone

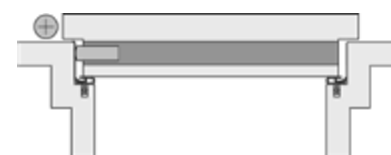
DIMENSIONS

Width x height	24 x 20 mm
Standard lengths	750, 900, 1050, 1200 mm
Minimum lengths*	230 mm
Maximum lengths	3000 mm
Can be shortened by	150 mm from standard lengths
Travel	16 mm



FIXING/MONTAGE

Fixing	screw fixed into the chamber at the underside of the door
Accessories included with delivery	5503



PERFORMANCE & CERTIFICATES

Fire	UL10B & UL10C (R38166)
Acoustic	54dB over 7mm gap, 51dB over 12mm gap
Smoke	Certifire TS21 (CF 5675)

* min. lengths cannot be shortened



Flush bolt

- / integrated flush bolt
- / continuous seal around bolt maintains optimal acoustic performance
- / machining of seal prepared by athmer before delivery
- / matching top and bottom versions available with same milling dimensions
- / compatible with Schall-Ex® L-15, Schall-Ex® Ultra and Stadi models



DIMENSIONS

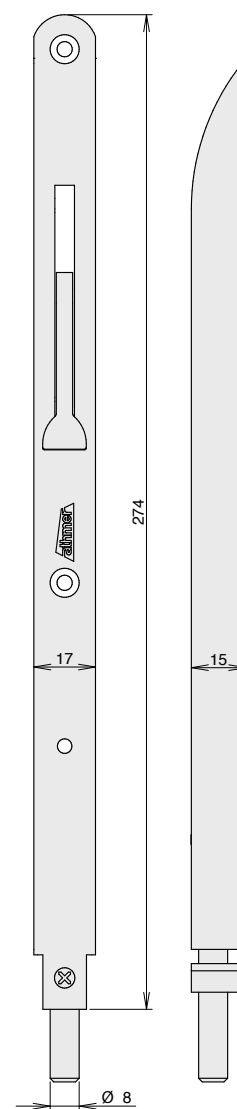
	for timber doors	for metal doors
Fitting tolerance range	8mm diameter bolt. 15mm throw, max. 10mm gap	
TK-15/T	250 mm	250 mm
TK-20/B-SU	266 mm	-
TK-15/BXL	276 mm	-
TK-20 II	-	274 mm

TECHNICAL DATA

Application	hinged doors
Material	stainless steel
Fixing	rebated into a groove in the door, screw fixed

ART.NO.

TK-15/T	1653
TK-20/B-SU	1652-2
TK-15/BXL	1792
TK-20 II	1651



Concealed flush bolt

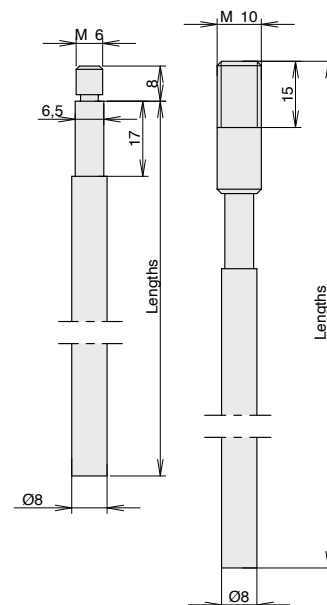
- / integrated concealed flush bolt
- / continuous seal around bolt maintains optimal acoustic performance
- / machining of seal prepared by athmer before delivery
- / fully concealed unit, ideal for automatic & panic systems
- / M6 & M10 bolt connection options
- / compatible with Schall-Ex® L-15, Schall-Ex® Ultra and Stadi models



DIMENSIONS/ART.NO. for timber doors for metal doors

Fitting tolerance range 8mm diameter bolt. 15mm throw, max. 10mm gap

1502-1187	M6, 1,187 mm	M6, 1,187 mm
1502-1217	M10, 1,217 mm	M10, 1,217 mm
1502-1487	M6, 1,487 mm	M6, 1,487 mm
1502-1517	M10, 1,517 mm	M10, 1,517 mm



TECHNICAL DATA

Application	hinged doors
Material	stainless steel
Fixing	rebed into a groove in the door, screw fixed



PS 1010 P Flex
PS 1212 P Flex
PS 1515 P Flex

- / winged corner seal with flexible base
- / equipped with two rows of durable self-adhesive backing tape
- / flexible base offers more flexibility during installation
- / ensures soft closing of the door
- / also suitable for retro-fit applications



TECHNICAL DATA

Application	timber and metal door frames
Gasket material	rigid and flexible PVC co-extrusion
Working temperature range	-15°C to +60°C

DIMENSIONS

Standard lengths	2100, 2200, 2400, 2500, 3000 mm
------------------	---------------------------------

FIXING

Fixing	stuck to the door stop with self-adhesive backing tape
--------	--

PERFORMANCE & CERTIFICATES

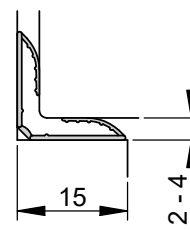
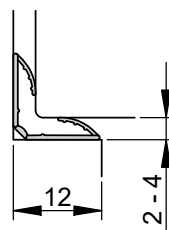
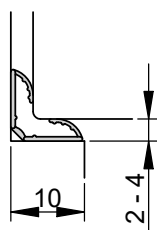
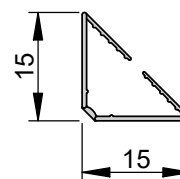
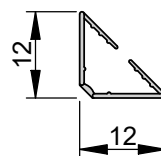
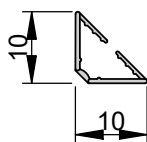
UL	UL 10C (R38166)
----	-----------------

COLORS/ART.NO.	PS 1010 P Flex	PS 1212 P Flex	PS 1515 P Flex
Black	P160130	P160136	P160138
Dark brown	P160132	P160137	P160139
White	P160131	P160135	P160140
Grey	P160159	P160147	P160151



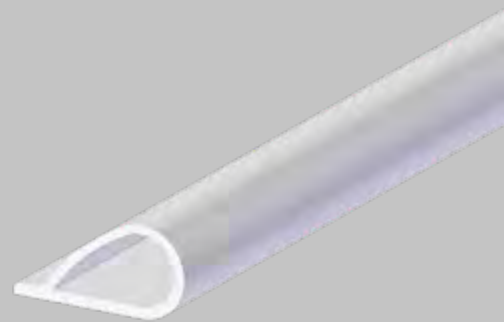


	PS 1010 P Flex	PS 1212 P Flex	PS 1515 P Flex
Fitting tolerance range	2 - 4 mm	2 - 4 mm	2 - 4 mm
Width x height	10 x 10 mm	12 x 12 mm	15 x 15 mm



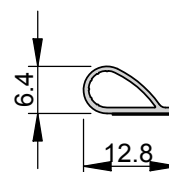
PS 788 S

- / frame-mounted teardrop compression seal
- / equipped with a durable self-adhesive backing tape
- / suitable for sound insulation and smoke sealing
- / ensures soft closing of the door
- / also suitable for retro-fit applications



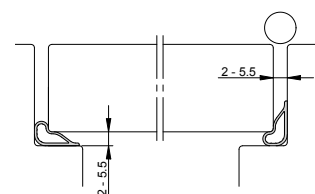
TECHNICAL DATA

Application	timber & metal door frames
Gasket material	silicone, self-extinguishing
Working temperature range	-20°C to +80°C



DIMENSIONS

Width x height	12.8 x 6.4 mm
Fitting tolerance range	2 - 5.5 mm
Standard lengths	50m coil



FIXING

Fixing	stuck to the door stop with self-adhesive backing tape
--------	--

PERFORMANCE & CERTIFICATES

Fire	EN1634-1**
------	------------

COLORS

ART.NO.

Black	P160040
White	P160142
Brown	P160041

**The test value may differ according to the EN 1634-1 test, as the complete door system must be checked.



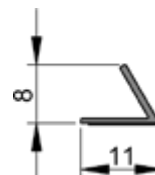
PS 744 S

- / single fin seal
- / equipped with a durable self-adhesive backing tape
- / suitable for sound insulation and for smoke sealing
- / well suited to tighter gaps and as a second frame seal
- / also suitable for retro-fit applications



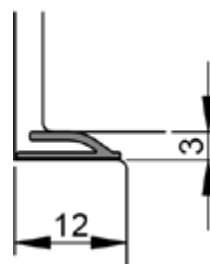
TECHNICAL DATA

Application	timber & metal door frames
Gasket material	silicone, self-extinguishing
Working temperature range	-20°C to +80°C



DIMENSIONS

Width x height	11 x 8 mm
Fitting tolerance range	3 -7 mm
Standard lengths	62m coil, 155m coil



FIXING

Fixing	stuck to the door stop with self-adhesive backing tape
--------	--

PERFORMANCE & CERTIFICATES

UL	UL 10C (R38166)
----	-----------------

COLORS

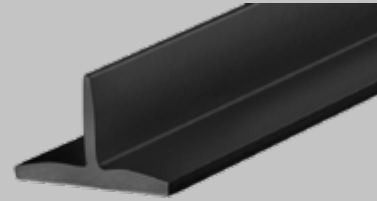
ART.NO.

black	P160104
Brown	P160102
White	P160105
Light grey	P160103



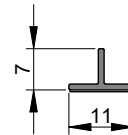
PS 1107 S

- / single fin seal suitable for most double door applications
- / equipped with a durable self-adhesive backing tape
- / also suitable for retro-fit applications



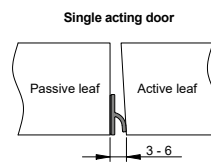
TECHNICAL DATA

Application	at the meeting stile of single and double action, double doors
Gasket material	silicone, self-extinguishing
Working temperature range	-20°C to +80°C



DIMENSIONS

Width x height	11 mm
Fitting tolerance range	3 - 6 mm
Standard lengths	62m coil, 155m coil



FIXING

Fixing	stuck to the door stop with self-adhesive backing tape
--------	--

PERFORMANCE & CERTIFICATES

UL	UL 10C (R38166)
----	-----------------

COLORS

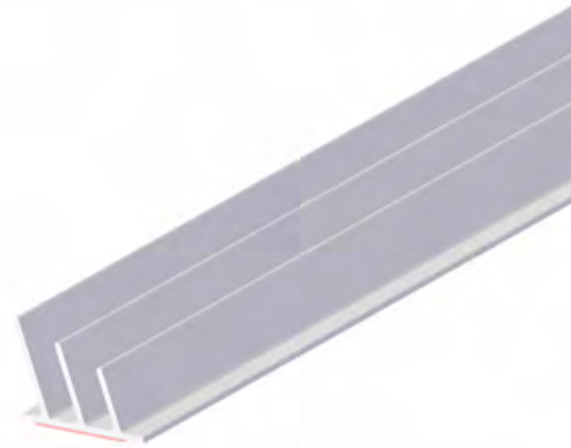
ART.NO.

Black	P160109
White	P160110
Brown	P160107
Light grey	P160108



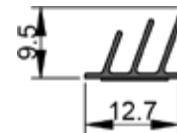
PS 1310 S

- / triple fin seal
- / equipped with a durable self-adhesive backing tape
- / suitable for sound insulation
- / suitable for smoke protection
- / also suitable for retro-fit applications



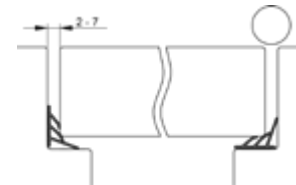
TECHNICAL DATA

Application	timber & metal door frames
Gasket material	silicone, self-extinguishing
Working temperature range	-20°C to +80°C



DIMENSIONS

Width x height	12.7 x 9.5 mm
Fitting tolerance range	2 -7 mm
Standard lengths	62m coil, 155m coil



FIXING

Fixing	stuck to the door stop with self-adhesive backing tape
--------	--

PERFORMANCE & CERTIFICATES

UL	UL 10C (R38166)
----	-----------------

COLORS

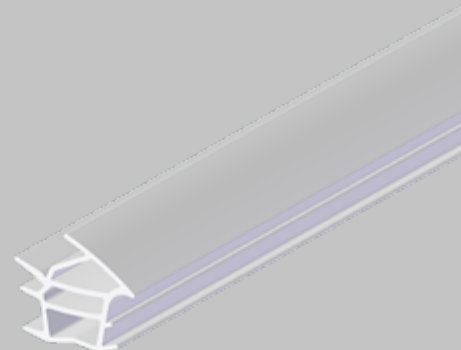
ART.NO.

Black	P160113
Brown	P160111
White	P160114
Light grey	P160112



PS 1817 S

- / stop-rebated compression seal
- / suitable for sound insulation
- / suitable for smoke sealing

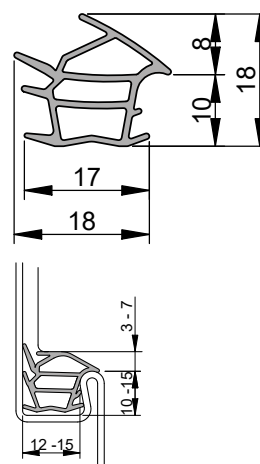


TECHNICAL DATA

Application	metal frame rebates
Gasket material	silicone, self-extinguishing
Working temperature range	-40°C to +200°C

DIMENSIONS

Width x height	18 x 18 mm
Fitting tolerance range	3 - 7 mm
Standard lengths	25m coil



FIXING

Fixing	into a groove in the door stop
--------	--------------------------------

PERFORMANCE & CERTIFICATES

UL	UL 10C (R38166)
----	-----------------

COLORS

ART.NO.

Black	P160187
Grey	P160145
White	P160188



PS 2807 S

- / surface-mounted acoustic perimeter seal for fitting around the head and jambs of existing doors
- / slim design
- / with elongated fixing holes for easy positioning and adjustment
- / fixing screws concealed by snap on cover
- / also suitable for retro-fit applications

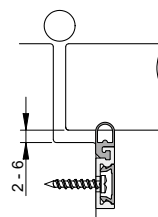
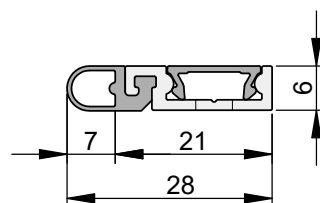


TECHNICAL DATA

Application	timber & metal frames
Gasket material	silicone self-extinguishing
Carrier material	aluminum, anodized
Working temperature range	-40°C to +200°C

DIMENSIONS

Width x height	28 x 6 mm
Fitting tolerance range	2 - 6 mm
Standard lengths	1.000, 2.100, 2.250, 2.500, 3.000 mm
Max. lengths	3.000 mm
Can be shortened by	any lengths



FIXING

Fixing	surface mounted to the door frame, screw fixed
--------	--

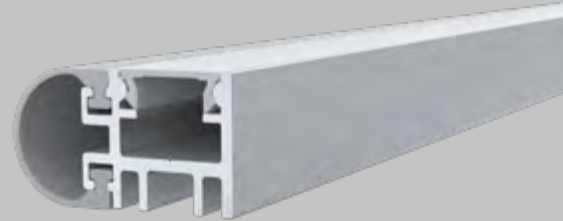
PERFORMANCE & CERTIFICATES

UL	UL 10C [R38166]
----	-----------------

COLORS (carrier, gasket)	ART.NO.	ACCESSORIES (incl. in delivery)
Silver anodized, grey	8-111	S019
Black anodized, black	8-112	S019

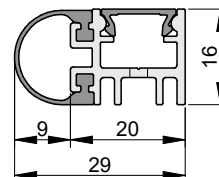
PS 2816 S

- / surface-mounted acoustic perimeter seal for fitting around the head and jambs of existing doors
- / with elongated fixing holes for easy positioning and adjustment
- / fixing screws concealed by snap on cover
- / also suitable for retro-fit applications



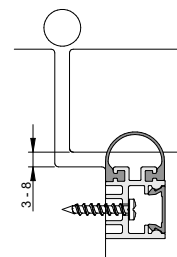
TECHNICAL DATA

Application	timber & metal frames
Gasket material	silicone, self-extinguishing
Carrier material	aluminum, anodized
Working temperature range	-40°C to +200°C



DIMENSIONS

Width x height	29 x 16 mm
Fitting tolerance range	3 - 8 mm
Standard lengths	1.000, 2.100, 2.250, 2.500, 3.000 mm
Maximum lengths	3.000 mm
Can be shortened by	any length



FIXING

Fixing	surface mounted to the door frame, screw fixed
--------	--

COLORS (carrier, gasket)	ART.NO.	ACCESSORIES (incl. in delivery)
Silver anodized, grey	8-115	S023
Black anodized, black	8-116	S023

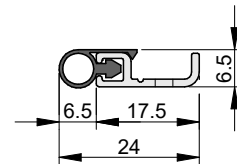


PS 2407 S

- / surface-mounted acoustic perimeter seal for fitting around the head and jambs of existing doors
- / slim design
- / with elongated fixing holes for easy positioning and adjustment
- / also suitable for retro-fit applications

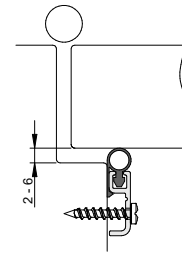
TECHNICAL DATA

Application	timber and metal frames
Gasket material	Vinyl
Carrier material	aluminum, anodized
Working temperature range	-40°C to +200°C



DIMENSIONS

Width x height	24 x 6 mm
Fitting tolerance range	2 - 6 mm
Standard lengths	1.000, 2.100, 2.250, 2.500, 3.000 mm
Max. lengths	3.000 mm
Can be shortened by	any lengths



FIXING

Fixing	surface mounted to the door frame, screw fixed
--------	--

PERFORMANCE & CERTIFICATES

UL	UL 10C (R38166)
----	-----------------

COLORS (carrier, gasket)	ART.NO.
Silver anodized, grey	P160119



PS 2906 S

- / surface-mounted acoustic perimeter seal for fitting around the head and jambs of existing doors
- / slim design
- / with elongated fixing holes for easy positioning and adjustment
- / also suitable for retro-fit applications

TECHNICAL DATA

Application	timber & metal frames
Gasket material	vinyl PVC
Carrier material	aluminum, anodized
Working temperature range	-15°C to +60°C

DIMENSIONS

Width x height	29 x 6 mm
Fitting tolerance range	2 - 6 mm
Standard lengths	1.000, 2.100, 2.250, 2.500, 3.000 mm
Maximum lengths	3.000 mm
Can be shortened by	any length

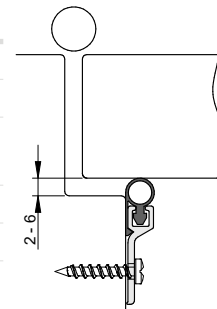
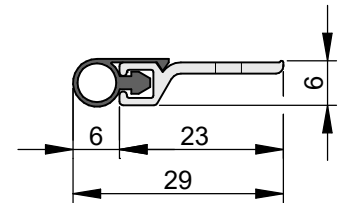
FIXING

Fixing	surface mounted to the door frame, screw fixed
--------	--

PERFORMANCE & CERTIFICATES

UL	UL 10C [R38166]
----	-----------------

COLORS (carrier, gasket)	ART.NO.
Silver anodized, grey	P160115





PS 3106 S

- / surface-mounted acoustic perimeter seal for fitting around the head and jambs of existing doors
- / slim design
- / with elongated fixing holes for easy positioning and adjustment
- / also suitable for retro-fit applications

TECHNICAL DATA

Application	timber and metal frames
Gasket material	vinyl PVC
Carrier material	aluminum, anodized
Working temperature range	-15°C to +60°C

DIMENSIONS

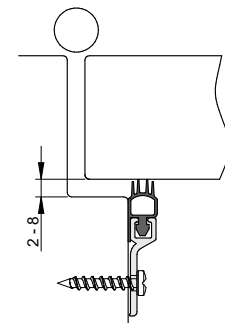
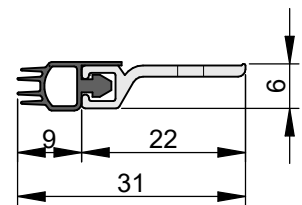
Width x height	31 x 6 mm
Fitting tolerance range	2 - 8 mm
Standard lengths	1.000, 2.100, 2.250, 2.500, 3.000 mm
Max. lengths	3.000 mm
Can be shortened by	any lengths

FIXING

Fixing	surface mounted to the door frame, screw fixed
--------	--

PERFORMANCE & CERTIFICATES

UL	UL 10C (R38166)
----	-----------------

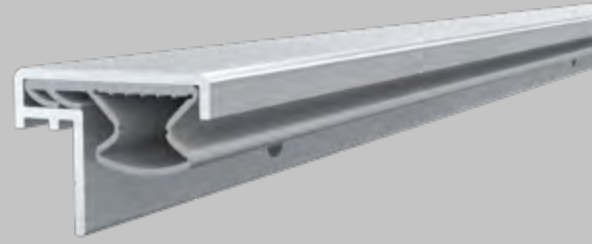


COLORS (carrier, gasket)	ART.NO.
Silver anodized, grey	P160117



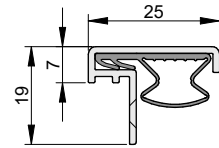
AS 2519 S

- / astragal/meeting stile seal
- / wide compression range
- / extremely low compression force for feather-light operation
- / also suitable for retro-fit applications



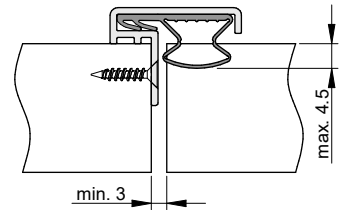
TECHNICAL DATA

Application	double-leaf timber and metal doors
Gasket material	silicone self-extinguishing
Carrier material	aluminum, anodized
Working temperature range	-40°C to +200°C



DIMENSIONS

Width x height	25 x 19 mm
Fitting tolerance range	0 - 4.5 mm
Standard lengths	2.100, 2.250, 2.500, 3.000 mm
Max. lengths	3.000 mm
Can be shortened by	any lengths



FIXING

Fixing	screw fixed to the meeting stile of double wing doors
--------	---

PERFORMANCE & CERTIFICATES

UL	UL 10C (R38166)
----	-----------------

COLORS (carrier, gasket)	ART.NO.	ACCESSORIES (incl. in delivery)
Silver anodized, grey	8-101	S020



BS 4006 S

- / versatile fin seal in a slim design
- / suitable for medium temperature smoke, draught, dust, and weather protection
- / covering gaps up to 20mm
- / with elongated fixing holes for easy positioning and adjustment
- / fixing screws concealed by snap on cover
- / works in combination with almost any threshold plate

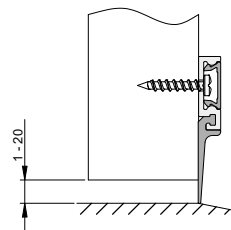
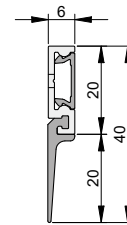


TECHNICAL DATA

Application	single and double swing, revolving, tilt-up and roller doors
Gasket material	self-extinguishing silicone
Carrier material	aluminum, anodized

DIMENSIONS

Width x height	6 x 40 mm
Bottom gap size	1 - 20 mm
Standard lengths	1.000, 2.100, 2.250, 2.500, 3.000 mm
Maximum lengths	3.000 mm
Can be shortened by	any length



FIXING

Fixing	surface mounted to the face of the door, screw fixed
--------	--

PERFORMANCE & CERTIFICATES

UL	UL 10C [R38166]
----	-----------------

COLORS (carrier, gasket)	ART.NO.	ACCESSORIES (incl. in delivery)
Silver anodized, grey	1-750	S019
Black anodized, black	1-751	S019



BS 4807 S

- / versatile fin seal in a slim design
- / suitable for medium temperature smoke, draught, dust, and weather protection
- / covering gaps up to 20mm
- / with elongated fixing holes for easy positioning and adjustment
- / fixing screws concealed by snap on cover
- / works in combination with almost any threshold plate

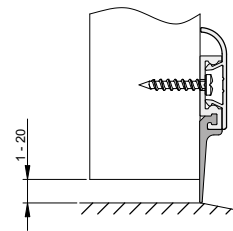
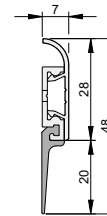


TECHNICAL DATA

Application	single and double swing, revolving, tilt-up and roller doors
Gasket material	self-extinguishing silicone
Carrier material	aluminum, anodized

DIMENSIONS

Width x height	7 x 48 mm
Bottom gap size	1 - 20 mm
Standard lengths	1.000, 2.100, 2.250, 2.500, 3.000 mm
Maximum lengths	3.000 mm
Can be shortened by	any length



FIXING

Fixing	surface mounted to the face of the door, screw fixed
--------	--

PERFORMANCE & CERTIFICATES

UL	UL 10C (R38166)
----	-----------------

COLORS (carrier, gasket)	ART.NO.	ACCESSORIES (incl. in delivery)
Silver anodized, grey	1-752	S019
Black anodized, black	1-753	S019



BS 4606 N

- / versatile fin seal can be used to cover gaps up to 14mm
- / suitable for medium temperature smoke, draught, dust, and weather protection
- / works in combination with almost any threshold plate

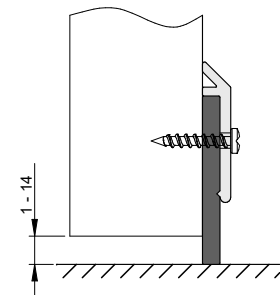
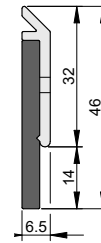


TECHNICAL DATA

Application	at the threshold of external doors
Gasket material	neoprene
Carrier material	aluminum, anodized

DIMENSIONS

Width x height	6,5 x 46 mm
Bottom gap size	1 -14 mm
Standard lengths	1000, 1200, 1500 mm
Maximum lengths	3.000 mm
Can be shortened by	any length



FIXING

Fixing	surface mounted to the face of the door, screw fixed
--------	--

PERFORMANCE & CERTIFICATES

UL	UL 10C (R38166)
----	-----------------

COLORS (carrier, gasket)	ART.NO.
Silver anodized, grey	P160153



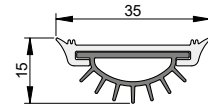
BS 3515 S

/ door shoe seal for applications where drop seals cannot be used



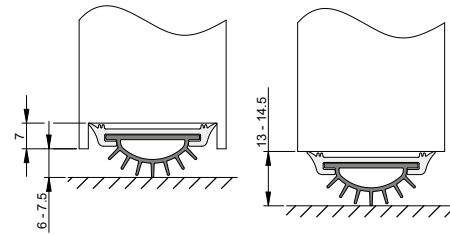
TECHNICAL DATA

Application	at the threshold of hinged, single and double action doors
Gasket material	PVC
Carrier material	aluminum, anodized



DIMENSIONS

Width x height	35 x 15 mm
Bottom gap size	[morticed] 6 - 7.5 mm, [surface mounted] 13 - 14.5 mm
Standard lengths	1.000, 1.500, 3.000 mm
Maximum lengths	3.000 mm
Can be shortened by	any length



FIXING

Fixing	screw fixed to the underside of the door
--------	--

PERFORMANCE & CERTIFICATES

UL	UL 10C (R38166)
----	-----------------

COLORS (carrier, gasket)	ART.NO.
Silver anodized, grey	P160094



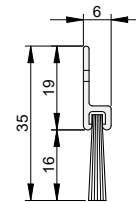
BR 3506

/ versatile brush strip for use in a variety of draft-proofing applications



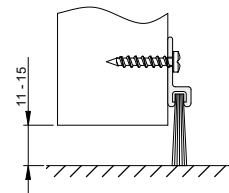
TECHNICAL DATA

Application	at the threshold of hinged, single action doors and around the perimeter of sliding doors
Brush material	PP
Carrier material	aluminum, anodized



DIMENSIONS

Width x height	6 x 35 mm
Bottom gap size	11 - 15 mm
Standard lengths	1.000, 2.100, 2.400, 3.000 mm
Maximum lengths	3.000 mm
Can be shortened by	any length



FIXING

Fixing	surface mounted to the face of the door, screw fixed
--------	--

PERFORMANCE & CERTIFICATES

UL	UL 10C [R38166]
----	-----------------

COLORS (carrier, brush)

Silver anodized, grey

ART.NO.

P160122



BS 5114 S

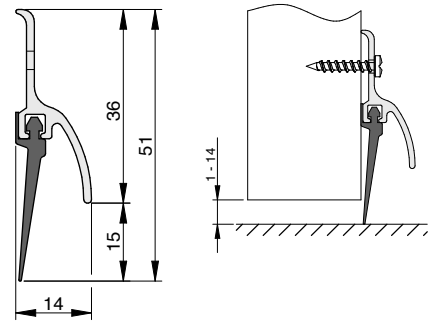
- / dual-purpose rain drip guard with gasket for protecting door thresholds from dripping water & draughts
- / suitable for medium temperature smoke, draught, dust, and weather protection
- / works in combination with almost any threshold plate

TECHNICAL DATA

Application	at the threshold of external doors
Gasket material	vinyl PVC
Carrier material	aluminum, anodized

DIMENSIONS

Width x height	14 x 51 mm
Bottom gap size	1 -14 mm
Standard lengths	1000, 2250, 2500, 3000 mm
Maximum lengths	3.000 mm
Can be shortened by	any length



FIXING

Fixing	surface mounted to the face of the door, screw fixed
--------	--

PERFORMANCE & CERTIFICATES

UL	UL 10C (R38166)
----	-----------------

COLORS (carrier, gasket)	ART.NO.
Silver anodized, grey	P160100



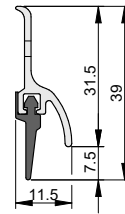


BS 3813 S

- / dual-purpose rain drip guard with gasket for protecting door thresholds from dripping water & draughts
- / suitable for medium temperature smoke, draught, dust, and weather protection
- / works in combination with almost any threshold plate

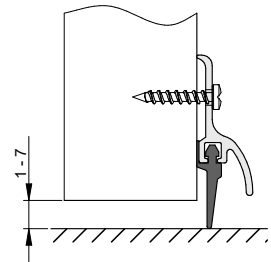
TECHNICAL DATA

Application	at the threshold of external doors
Gasket material	vinyl PVC
Carrier material	aluminum, anodized



DIMENSIONS

Width x height	11,5 x 39 mm
Bottom gap size	1 -7 mm
Standard lengths	1000, 2250, 2500, 3000 mm
Maximum lengths	3.000 mm
Can be shortened by	any length



FIXING

Fixing	surface mounted to the face of the door, screw fixed
--------	--

PERFORMANCE & CERTIFICATES

UL	UL 10C (R38166)
----	-----------------

COLORS (carrier, gasket)	ART.NO.
Silver anodized, grey	P160096



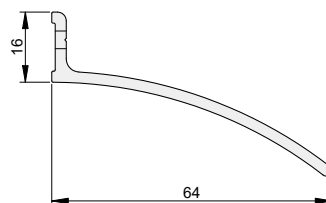
RG 7040

- / overhead rain drip guard
- / channels rain water from entrance doors
- / suitable for single and double leaf doors



TECHNICAL DATA

Application	at the head of external doors
Material	aluminum, anodized



DIMENSIONS

Standard lengths	1000, 1250, 2250, 2500, 3000 mm
Maximum lengths	3.000 mm
Can be shortened by	any length

FIXING

Fixing	screw fixed to the wall above the door
--------	--

PERFORMANCE & CERTIFICATES

UL	UL 10C (R38166)
----	-----------------

COLORS

ART.NO.

Silver anodized	P160123
-----------------	---------

RG 7721

- / overhead rain drip guard
- / channels rain water from entrance doors
- / suitable for single and double leaf doors

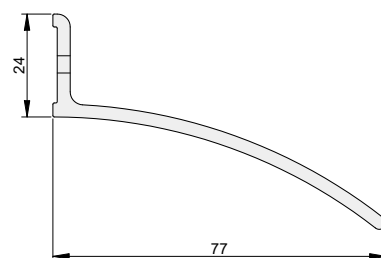


TECHNICAL DATA

Application	at the head of external doors
Material	aluminum, anodized

DIMENSIONS

Standard lengths	1000, 1250, 2250, 2500, 3000 mm
Maximum lengths	3.000 mm
Can be shortened by	any length



FIXING

Fixing	screw fixed to the wall above the door
--------	--

COLORS

Silver anodized

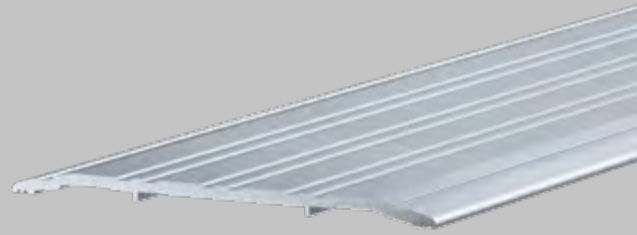
ART.NO.

P160124



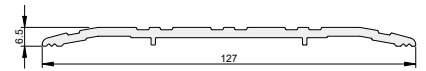
AT 12706

/ saddle threshold with low profile



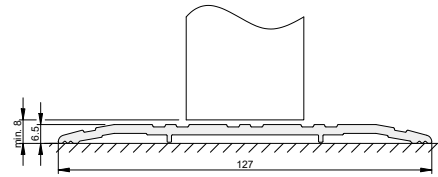
TECHNICAL DATA

Application	at the threshold of hinged single- and double action doors
Material	aluminum, anodized



DIMENSIONS

Width x height	127 x 6.5 mm
Bottom gap size	≥8 mm
Standard lengths	1.000, 1.250, 2.250, 2.500, 3.000 mm
Max. lengths	3.000 mm
Can be shortened by	any lengths



FIXING

Fixing	screw fixed to the floor with screws and dowels
--------	---

PERFORMANCE & CERTIFICATES

UL	UL 10C (R38166)
----	-----------------

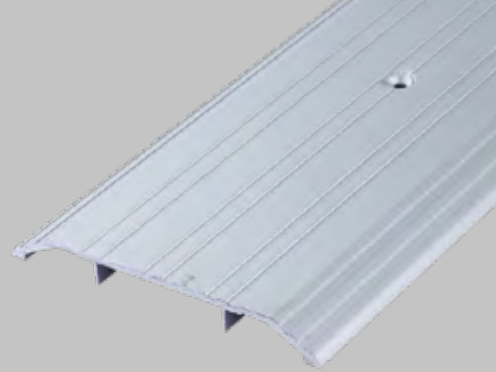
COLORS

Silver anodized	ART.NO. P160084
-----------------	-----------------



AT 12713

/ saddle threshold with high profile



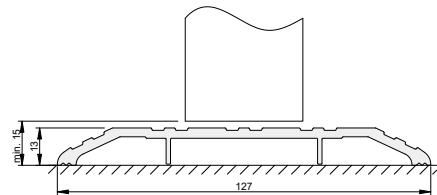
TECHNICAL DATA

Application	at the threshold of hinged single- and double action doors
Material	aluminum, anodized



DIMENSIONS

Width x height	127 x 13 mm
Bottom gap size	≥15 mm
Standard lengths	1.000, 1.250, 2.250, 2.500, 3.000 mm
Max. lengths	3.000 mm
Can be shortened by	any lengths



FIXING

Fixing	screw fixed to the floor with screws and dowels
--------	---

PERFORMANCE & CERTIFICATES

UL	UL 10C (R38166)
----	-----------------

COLORS

Silver anodized

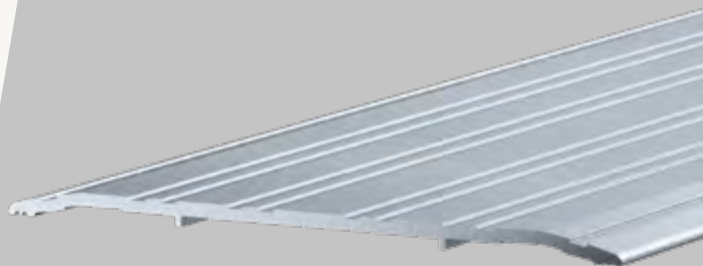
ART.NO.

P160086



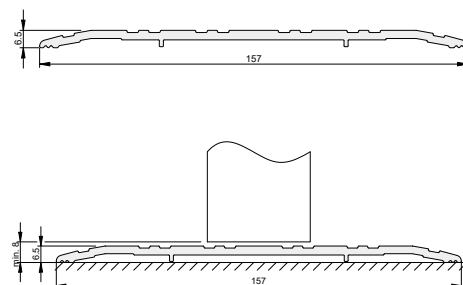
AT 15006

/ saddle threshold with low profile



TECHNICAL DATA

Application	at the threshold of hinged single action doors
Material	aluminum, anodized



DIMENSIONS

Width x height	157 x 6.5 mm
Bottom gap size	≥8 mm
Standard lengths	1.000, 1.250, 2.250, 2.500, 3.000 mm
Max. lengths	3.000 mm
Can be shortened by	any lengths

FIXING

Fixing	screw fixed to the floor with screws and dowels
--------	---

PERFORMANCE & CERTIFICATES

UL	UL 10C (R38166)
----	-----------------

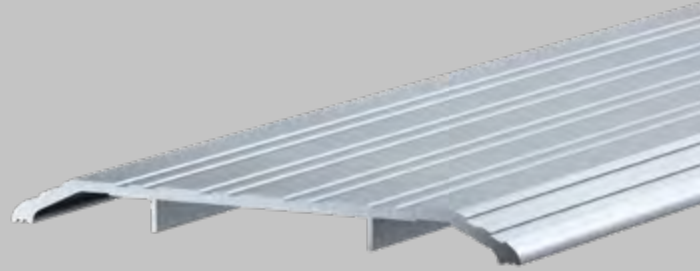
COLORS

Silver anodized	ART.NO. P160092
-----------------	-----------------



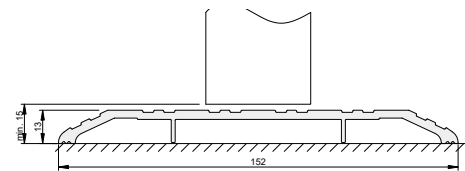
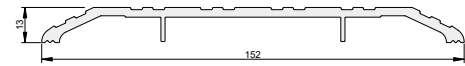
AT 15213

/ paddle threshold with low profile



TECHNICAL DATA

Application	at the threshold of hinged single action doors
Material	aluminum, anodized



DIMENSIONS

Width x height	152 x 13 mm
Bottom gap size	≥15 mm
Standard lengths	1.000, 1.250, 2.250, 2.500, 3.000 mm
Max. lengths	3.000 mm
Can be shortened by	any lengths

FIXING

Fixing	screw fixed to the floor with screws and dowels
--------	---

PERFORMANCE & CERTIFICATES

UL	UL 10C (R38166)
----	-----------------

COLORS

Silver anodized	ART.NO. P160090
-----------------	-----------------

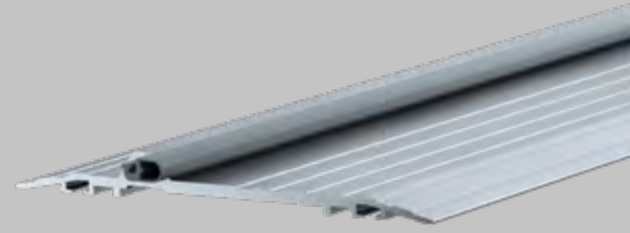
6 Threshold plates
6.1 stainless steel & aluminium plates

athmer.com



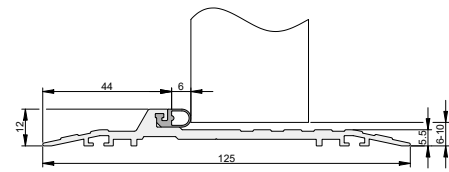
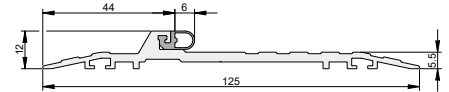
AT 12712 S

- / panic threshold with Silicone compression gasket
- / effective sealing against draught, light and noise



TECHNICAL DATA

Application	at the threshold of hinged single action doors
Gasket material	self-extinguishing silicone
Carrier material	aluminum, anodized
Working temperature	-40°C to +200°C



DIMENSIONS

Width x height	125 x 12 mm
Bottom gap size	6 - 10 mm
Standard lengths	1.000, 1.250, 2.250, 2.500, 3.000 mm
Max. lengths	3.000 mm
Can be shortened by	any lengths

FIXING

Fixing	screw fixed to the floor with screws and dowels
--------	---

PERFORMANCE & CERTIFICATES

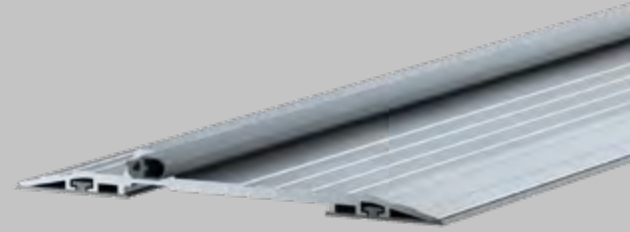
UL	UL 10C (R38166)
----	-----------------

COLORS [carrier, gasket]	ART.NO.	ACCESSORIES [incl. in delivery]
Silver anodized, grey	3-201	S022



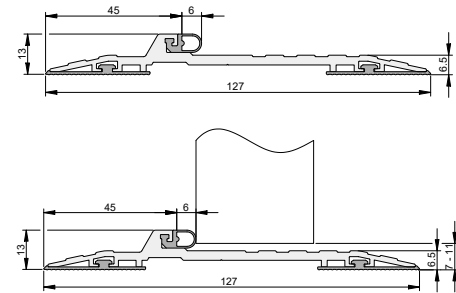
AT 12713 S

- / panic threshold with silicone compression gasket
- / comes with water tight bedding gasket for effective acoustic sealing and vibration control
- / effective sealing against rain, draught, light and noise



TECHNICAL DATA

Application	at the threshold of hinged single action doors
Gasket material	self-extinguishing silicone; bottom seal: PVC
Carrier material	aluminum, anodized
Working temperature	-15°C to +60°C



DIMENSIONS

Width x height	127 x 13 mm
Bottom gap size	7 - 11 mm
Standard lengths	1.000, 1.250, 2.250, 2.500, 3.000 mm
Max. lengths	3.000 mm
Can be shortened by	any lengths

FIXING

Fixing	screw fixed to the floor with screws and dowels
--------	---

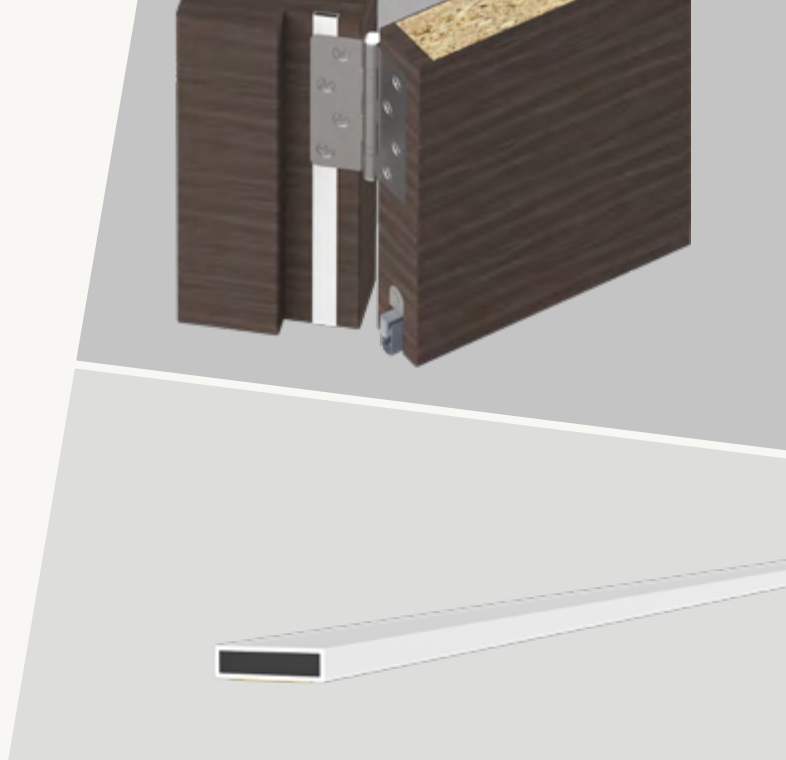
PERFORMANCE & CERTIFICATES

UL	UL 10C (R38166)
----	-----------------

COLORS (carrier, gasket)	ART.NO.	ACCESSORIES (incl. in delivery)
Silver anodized, grey	3-202	S022

FP Series

- / plain, rigid box graphite fire seal
- / provides fire protection for doors
- / equipped with a durable self-adhesive backing tape
- / supplied in lengths



TECHNICAL DATA

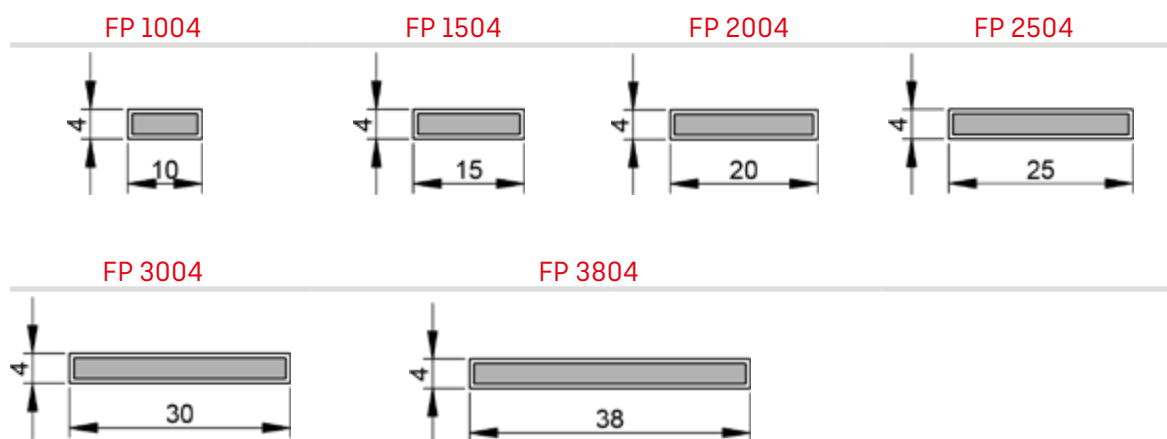
Application	fire rated timber doors & frames
Material	PVC encapsulated graphite

PERFORMANCE & CERTIFICATES

Fire	EN 1634-1*
------	------------

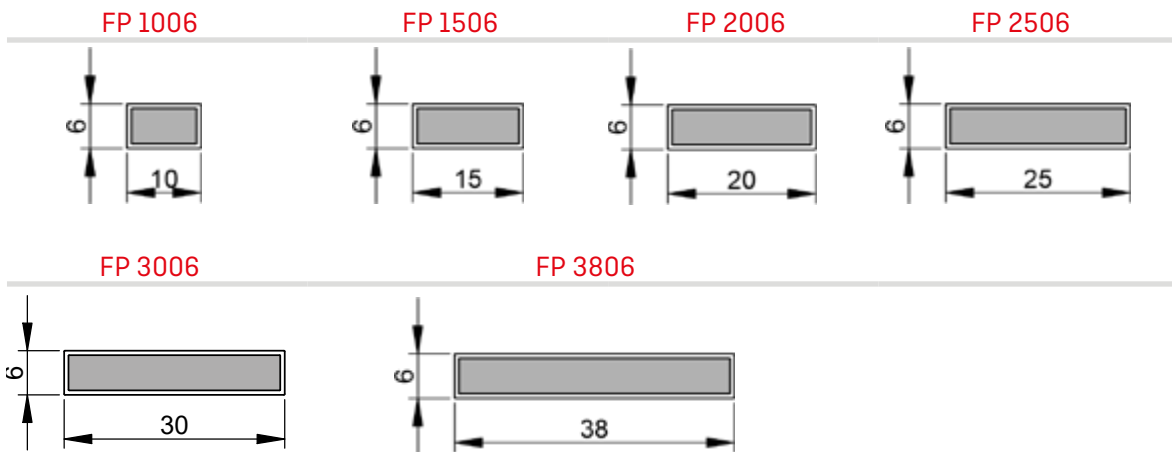
DIMENSIONS

Standard lengths	2100, 2400, 3000 mm
------------------	---------------------



COLORS/ART.NO.	FP 1004	FP 1504	FP 2004	FP 2504	FP 3004	FP 3804
Red	F160052	F160055	F160058	F160150	F160061	F160064
Black	F160105	F160106	F160107	F160153	F160109	F160108
Brown	F160053	F160056	F160059	F160151	F160062	F160065
White	F160054	F160057	F160060	F160152	F160063	F160066

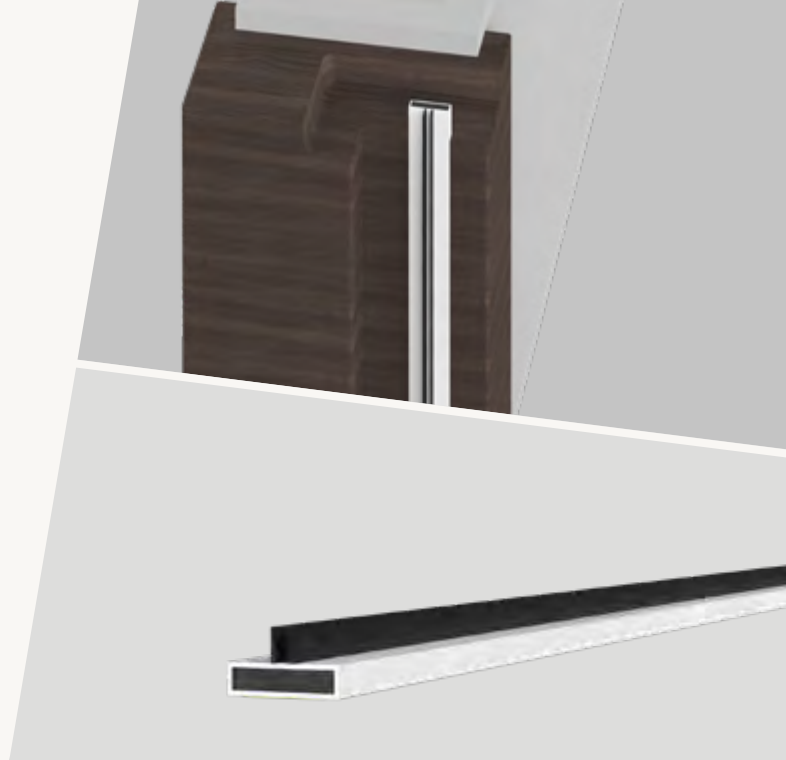
*The test value may differ according to the EN 1634-1 test, as the complete door system must be checked.



COLORS/ART.NO.	FP 1006	FP 1506	FP 2006	FP 2506	FP 3006	FP 3806
Black	F160197	F160201	F160205	F160199	F160203	F160207
Brown	F160124	F160125	F160126	F160127	F160128	F160129
White	F160196	F160200	F160204	F160198	F160202	F160206

FF-C Series

- / rigid box graphite fire & smoke seal with double central fin
- / provides fire, smoke and acoustic protection for doors
- / equipped with a durable self-adhesive backing tape
- / supplied in lengths



TECHNICAL DATA

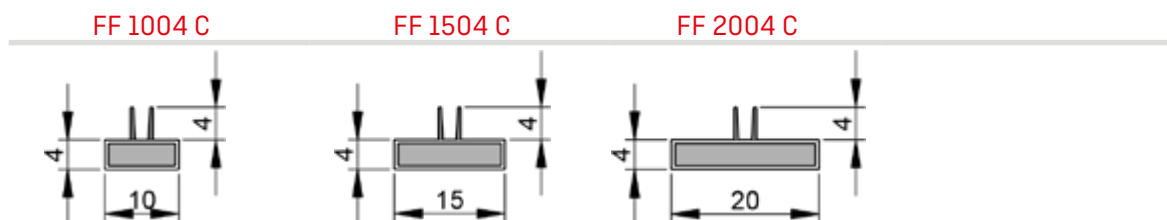
Application	fire rated timber doors & frames
Material	PVC encapsulated graphite, with soft PVC fins

PERFORMANCE & CERTIFICATES

Fire	EN 1634-1*
------	------------

DIMENSIONS

Standard lengths	2100, 2400, 3000 mm
------------------	---------------------



COLORS/ART.NO.	FF 1004 C	FF 1504 C	FF 2004 C
Red	F160183	F160141	F160145
Black	F160184	F160144	F160148
Brown	F160186	F160142	F160146
White	F160185	F160143	F160147

*The test value may differ according to the EN 1634-1 test, as the complete door system must be checked.

FF-D Series

- / rigid box graphite fire & smoke seal with double edge fin
- / provides fire, smoke and acoustic protection for doors
- / equipped with a durable self-adhesive backing tape
- / supplied in lengths



TECHNICAL DATA

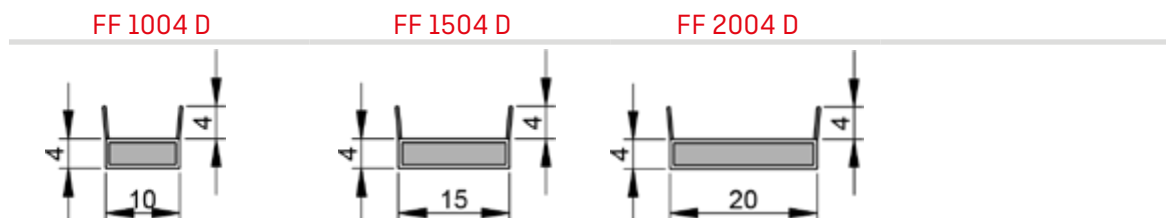
Application	fire rated timber doors & frames
Material	PVC encapsulated graphite, with soft PVC fins

PERFORMANCE & CERTIFICATES

Fire	EN 1634-1*
------	------------

DIMENSIONS

Standard lengths	2100, 2400, 3000 mm
------------------	---------------------



COLORS/ART.NO.	FF 1004 D	FF 1504 D	FF 2004 D
Red	F160076	F160079	F160082
Black	F160113	F160114	F160115
Brown	F160077	F160080	F160083
White	F160078	F160081	F160084

*The test value may differ according to the EN 1634-1 test, as the complete door system must be checked.

Interdens®

- / phosphate (MAP) -based intumescent sheet
- / provides fire protection for door ironmongery
- / equipped with a durable self-adhesive backing tape
- / supplied in strips, sheet form or can be cut to size
- / Interdens® is the registered trademark of BASF Wolman GmbH, Sinzheim



TECHNICAL DATA

Application	fire rated timber & metal doors
Material	Interdens®

PERFORMANCE & CERTIFICATES

Fire	EN 1634-1*
------	------------

DIMENSIONS

Standard lengths	1050 mm strips 2040 x 1000 mm sheet
------------------	--

COLORS/ART.NO.

1 mm sheet	P160076
2 mm sheet	P160077

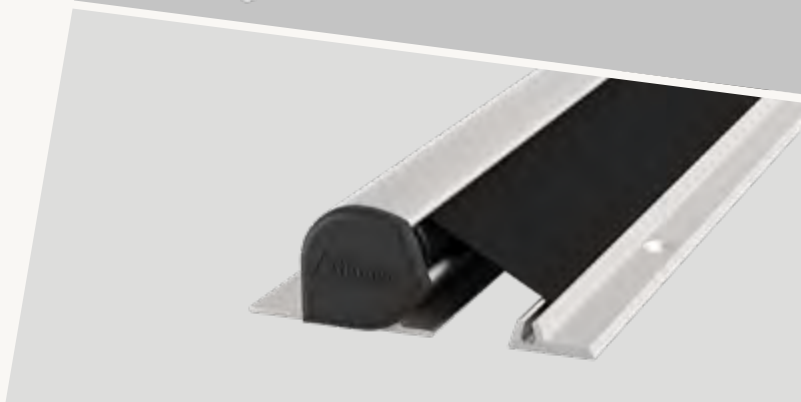
*The test value may differ according to the EN 1634-1 test, as the complete door system must be checked.



NR-25

5-101

- / proven protective system for decades
- / compact form
- / optional version for fitting to glass doors
- / roller blind automatically maintains constant tension
- / fire retardant synthetic fibre



APPLICATION

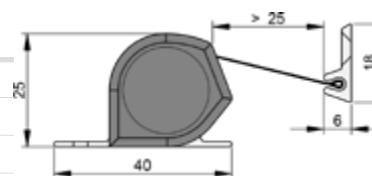
Danger point	secondary closing edge, opposite hinge side
Door type	PVC profile door, flush door, rebated doors, flush profile door, multifunction door
Door leaf material	timber, aluminium, PVC, steel
Door frame material	timber, aluminium, PVC, steel
Suitable for fire protection	yes
Doors with panic hardware/ ram protection bracket	yes

TECHNICAL DATA

Material profile	aluminium
Surface colors (color profile)	aluminum anodized or color coated, flexible color design possible
Standard colors	C-0, C-31, RAL9016, RAL7016 (special colors optional)
Material cover	synthetic fiber
Color cover	black
Delivery length	325 mm - 2500 mm
Delivery length BR2000/ BR2125	1925/ *
Standard length for power operated doors EN16005	2015 mm
Special lengths available	yes

FIXING

Retrofittable	yes
Mounting	screwed
Disassembly	screwed
Fixing	visibly screwed



COLORS

ART.NO.

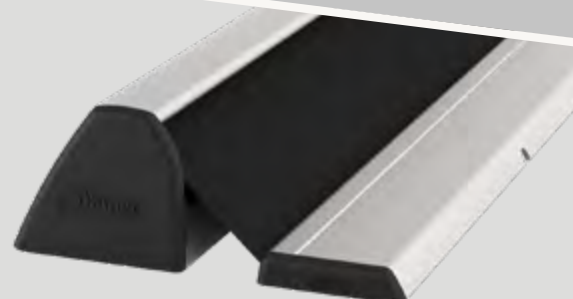
C-31	5-185
RAL 9016	5-109
RAL 7016	5-104
Specila colors	5-499

* For doors with BR2125 we recommend a delivery length of 2,050 mm

NR-32 UniSafe®

5-901

- / easy to install and dismantle
- / one design for all applications
- / click system with concealed screws
- / roller blind automatically maintains constant tension
- / flexible choice of colours



APPLICATION

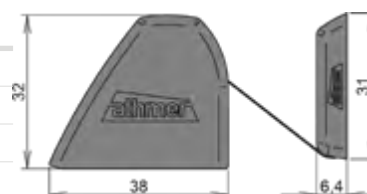
Danger point	secondary closing edge, opposite hinge side
Door type	PVC profile door, flush door, rebated doors, flush profile door, multifunction door
Door leaf material	timber, aluminium, PVC, steel
Door frame material	timber, aluminium, PVC, steel
Suitable for fire protection	yes
Doors with panic hardware/ ram protection bracket	yes

TECHNICAL DATA

Material profile	aluminium
Surface colors [color profile]	aluminum anodized or color coated, flexible color design possible
Standard colors	C-0, C-31, RAL9016, RAL7016 [special colors optional]
Material cover	synthetic fiber
Color cover	black, white-black, yellow-black, bordeaux-black, blue-black, green-black, black XL
Delivery length	325 mm - 3000 mm
Delivery length BR2000/ BR2125	1925 mm/ 2050 mm
Standard length for power operated doors EN16005	2000, 2500 mm
Special lengths available	yes
Protective cap end profile	yes

FIXING

Retrofittable	yes
Mounting	clicked
Diassembly	unlock
Fixing	invisibly screwed
Accessories	ram protection



COLORS

ART.NO.

C-31	5-985
RAL 9016	5-909
RAL 7016	5-904
Specila colors	5-999

B0-13

5-455

/ for doors without rebate with screw-on flap hinges



APPLICATION

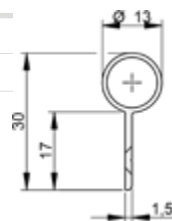
Danger point	secondary closing edge, hinge side
Door type	flush door
Door leaf material	timber
Door frame material	timber, aluminium-metal
Suitable for fire protection	yes

TECHNICAL DATA

Material profile	aluminium
Surface colors (color profile)	aluminum anodized or color coated, flexible color design possible
Standard colors	C-0, C-31, RAL9016 (special colors optional)
Delivery length	90 mm - 3000 mm
Special lengths available	yes
Standard length self cutting	1750, 1950 mm available as set (suitable for mounting below, between and above the hinges)
For hinge diameter	12-14 mm

FIXING

Retrofittable	yes
Fixing	visibly screwed
Accessories	cover cap



COLORS

ART.NO.

C-31	5-458
RAL 9016	5-456
Specila colors	5-458

Headquarter, Germany
athmer oHG
Sophienhammer
+49 2932 477 500

info@athmer.com

Middle East, Dubai, UAE
athmer Middle East BMT LLC
+971 4 346 3800

dubai@athmer.com

South Asia, Pune, India
Athmer South Asia Pvt Ltd
+91 9962 5072 72

sa@athmer.com

Southeast Asia, Singapore
Athmer Southeast Asia Pte. Ltd.
+65 9838 3252

sea@athmer.com

Qingdao, China
Qingdao Sophienhammer Hardware Co., Ltd.
+86 532 8098 1098

info@athmer.cn



Follow us on WeChat

athmer